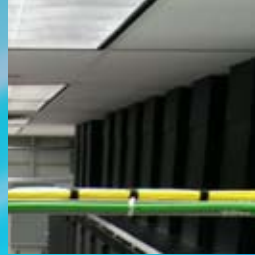
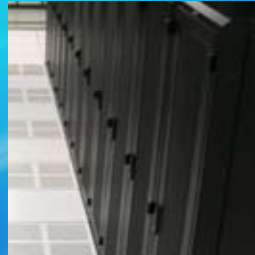


SECURE  
FACILITY



RELIABLE  
REDUNDANT  
POWER



PERFORMANCE



Data Center • Colocation Services • Business Continuity • Disaster Recovery



### SAS 70 Type II Certified:

H5 Colo has just completed SAS70 Type II Audit and will be regularly audited to ensure strict adherence to established controls, guidelines, and policies.

### N+1 power systems providing 200 watts per Square Foot, 2 Megawatt generator, Automatic Transfer Switch, UPS systems, and flexible power configurations.

H5 Colo has redundant building feeds, N+1 UPS system, Battery backups, and a 2 Megawatt generator. H5 Colo can provide customers with diverse power connections from the UPS through separate transformers and panels. Regular Electrical Panel inspections reduces the possibility of bad or overloaded breakers. The client's environment maintains availability and productivity regardless of the loss of any component.

### N2 Redundant HVAC environmental control

- o 24 independent Liebert Units, roof-mounted condensers cool the data center & provide N+1 redundancy
- o Building air handlers have been engineered to duct chiller air into the Data Center in case of an emergency. These chillers will be automatically set to their lowest temperature to cool the data center should the temperature exceed normal operating parameters, thus providing N2 redundancy
- o In order to avoid condensation or the possibility of electrostatic discharge, the Lieberts also maintain a relative humidity of 45%-55%
- o All components electronically monitored 24/7 by the Network Operations Center
- o Professional quarterly maintenance & inspection

### Data Center Suites ▪ Cages ▪ Cabinets

H5 Colo offers several options to meet the needs of your growing business & enable completion of your business objectives. Options include:

- o Full Cabinets – 24 inches wide by 42 inches deep locking cabinets with chimney attachments to increase energy efficiency & protect the health of your equipment and data
  - ▶ Chimney attachments serve as a green element to the data center environment & produce energy efficiencies up to 15% or more
- o ½ Cabinets with all the same amenities of a full cabinet
- o Customized private cages with locking doors for clients needing a cost effective solutions for segregating their environment in a shared collocation space
- o Suites – a completely separate environment behind walls with electronically controlled access doors

### Pre-action (dry pipe) fire suppression with heat and smoke detection

- o "Dry-Pipe Double Interlock Pre-action Sprinkler System"
- o Early fire/smoke detection system
- o Leak containment and detection systems
- o All components electronically monitored 24/7 by the Network Operations Center
- o Professional quarterly maintenance & inspection

### On-site 24 / 7 Environmental and Bandwidth Monitoring

- On-Site 24/7 Network Operations Center
- Zoned HVAC monitoring for temperature and Humidity
- Metered PDU's monitored for electrical consumption in Colo Cabinets
- Port level bandwidth utilization monitoring and health status
- Leak containment detection monitoring

### Multiple layers of security with 24 / 7 on-site personnel

- Controlled access to all areas using a DSS proximity card system (electromagnetic & electric strike)
- Data Center access requires government issued photo identification, documented credentials and access levels on file
- Monthly audits of access privileges are conducted to ensure compliance with policies and procedures
- All entrances / exits remain locked at all times
- Dual Layers of surveillance and recording throughout facility. Combination of Analog and I/P camera systems throughout facility connects to separate recording devices at various locations

### 100% uptime of critical systems

- Multiple independent fiber entry points into building
- Our network infrastructure provides optimal performance and guaranteed availability
- A Cisco-powered network including redundant Cisco routers configured for BGP/HSRP with diverse carriers provide a completely fault-tolerant network configuration to internet
- Customers are connected to the network via Cat5e and Fiber
- H5 Colo's carrier neutral policy and proximity to fiber from multiple carriers, allows customers to choose the connectivity solution that best fits their requirements

### Other amenities include:

- Oversize dedicated freight elevator
- State-of-the-art conference facilities
- On-site 24 / 7 Network Operations Center
- H5 Colo offers two Power Rate Plans, which include "Power Protection Plan" and the unique "Variable Rate Plan"

"Unique to this data center is limited lab space on the same floor and office space in the building next door, with dedicated fiber cross connects from the Colo to the tenants' office." states Walt Chambers, President of H5 Colo.



H5 Colo, launched in May 2008, is a SAS 70 type II compliant data center established to provide high quality data center and colocation solutions. The facility is fully managed by its Network Operations Center Staff and engineering teams 24/7. H5 Colo has assembled a team of professionals with years of experience in providing “World-Class” customer service to organizations ranging from small business to the Fortune 500s. The team at H5 Colo understands business needs as well as technology. H5 Colo offers customers reduced operating costs and a 100% uptime guarantee.

H5 Colo is located just blocks from the “High Five” interchange near Central Expressway and Hwy 635, centrally situated from downtown Dallas, McKinney, Mesquite, the “Mid-Cities”, and DFW Airport.

